

# FRAMEWORK

Beginning Governance, Risk, & Compliance

## The Breakdown of the Framework Process

### Step 1

#### DISCOVERY AND INVENTORY

You can not treat, mitigate or improve what you do not:

 **HAVE**     **KNOW YOU HAVE**     **THINK YOU HAVE**

This is the beginning, and oftentimes, you are doing more than you think you are.

### Step 2

#### ASSESSMENT AND ANALYSIS

After assessing Step 1, the fun begins. In this step, the objective is to identify what you intend to:



- a) PROTECT**
- b) IMPROVE**
- c) MEASURE**
- d) ALL OF THE ABOVE**

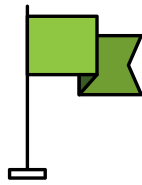
We employ a risk based approach ensuring that your business objectives are aligned with your system and engagement outcomes.

# FRAMEWORK

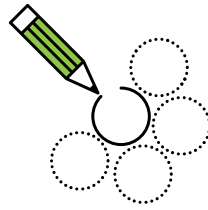
## Step 3

### IMPLEMENTATION

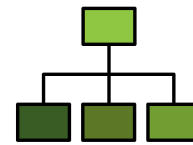
Whether we're rolling out the recommendations as a result of our analysis, or setting you up on Framework to begin your selected path, this phase will:



a) **ESTABLISH** your preferred control sets



b) **DEFINE** your reporting requirements



c) **IMPLEMENT** your specific workflows

As with any other phase, you can operate solely on your own, co-source your efforts using our assistance or allow us to deliver the turn-key solution.

## Step 4

### REMEDiate, REPORT AND MEASURE

A lot of ground has been covered since phase one.

Did it deliver the business alignment / impact / risk treatment that you were in search of?

## Ready to navigate your GRC landscape?

What direction is your enterprise heading? Are the policies that you've adapted directing the course of your business to maximum profitability? Is your company united on goals and strategy?



**Framework**  
GRC Software  
HATTIESBURG, MS  
P 888 300 1853  
info@juvotec.framework.com  
framework.juvotec.com

#### Framework Representatives

**Chris Morse**  
Engagement Partner  
cmorse@juvotec.com  
P 601 544 2250

**Jason P. Smith**  
jsmith@juvotec.com  
P 601 620 4606